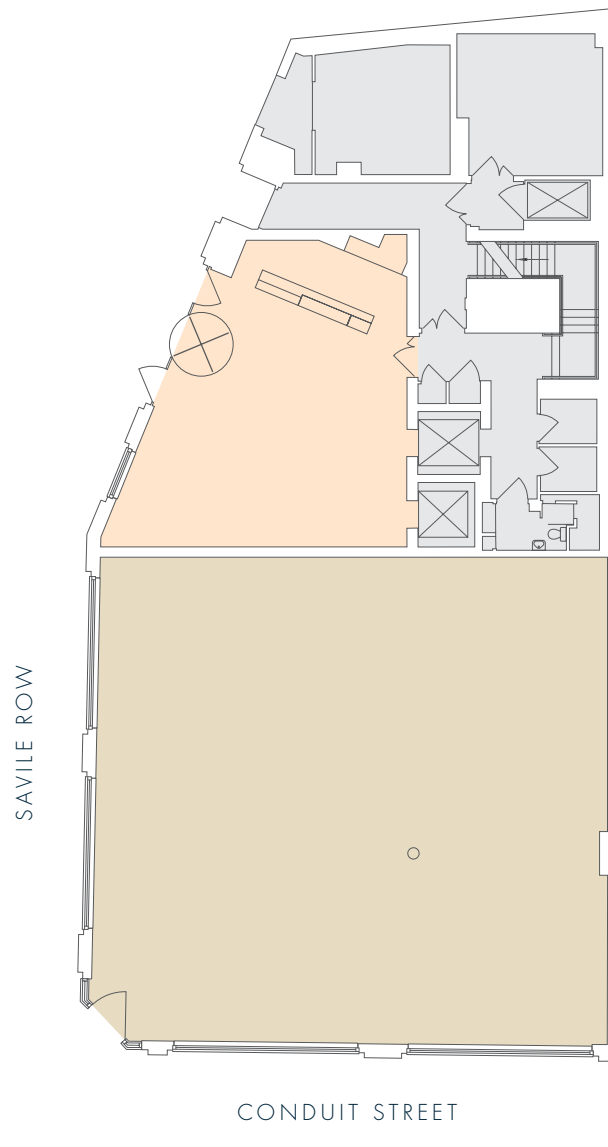




# Ground Floor

806 sq ft / 74.9 sq m



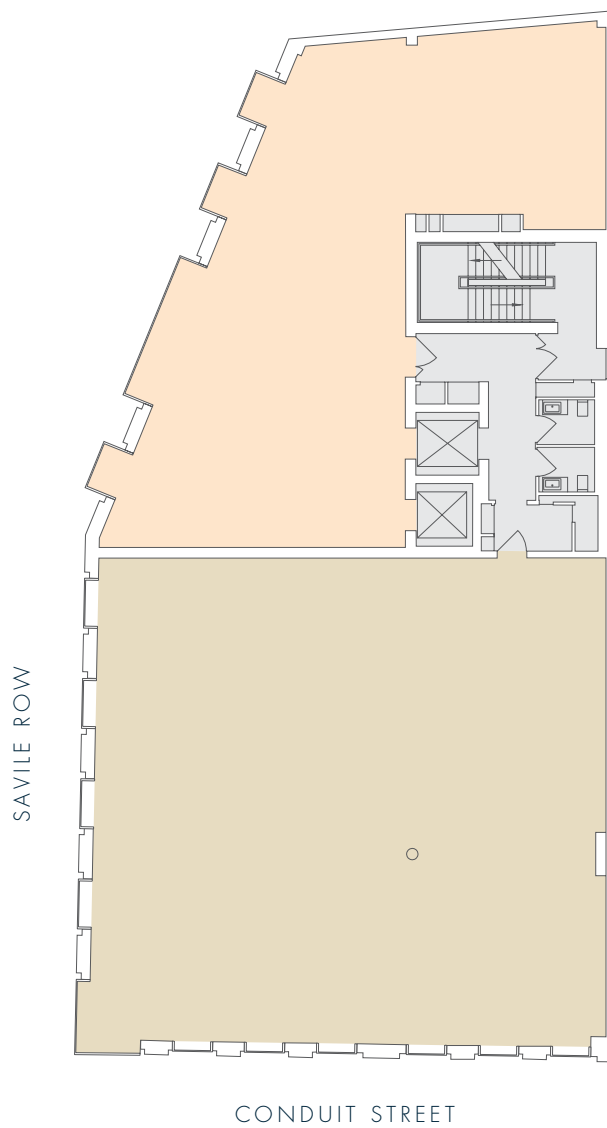
Floor plans not to scale. For indicative purposes only.





# First Floor

1,707 sq ft / 158.6 sq m



- Office
- Core
- DSQUARED2 (Retail)

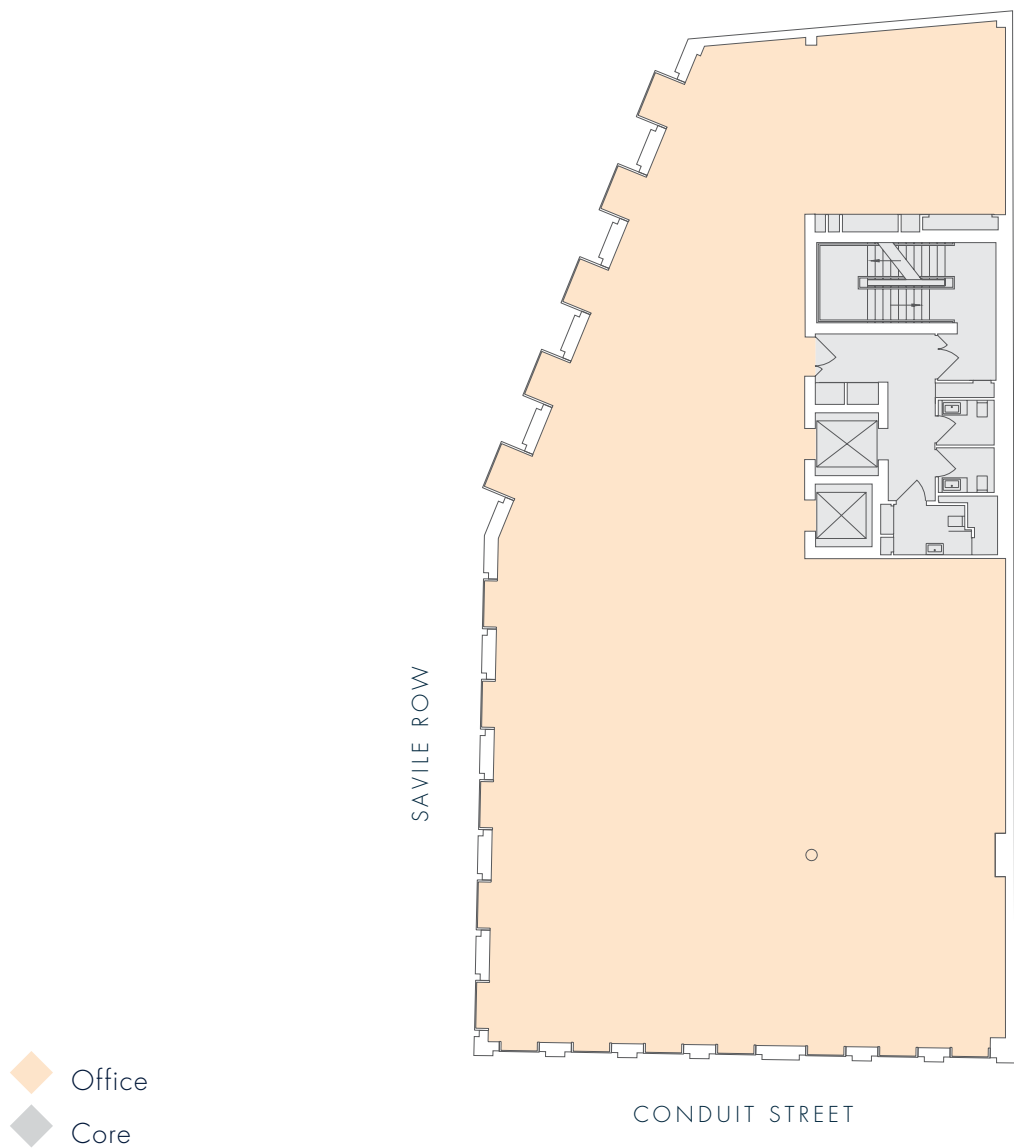
Floor plans not to scale. For indicative purposes only.





# Third Floor

4,543 sq ft / 422.1 sq m



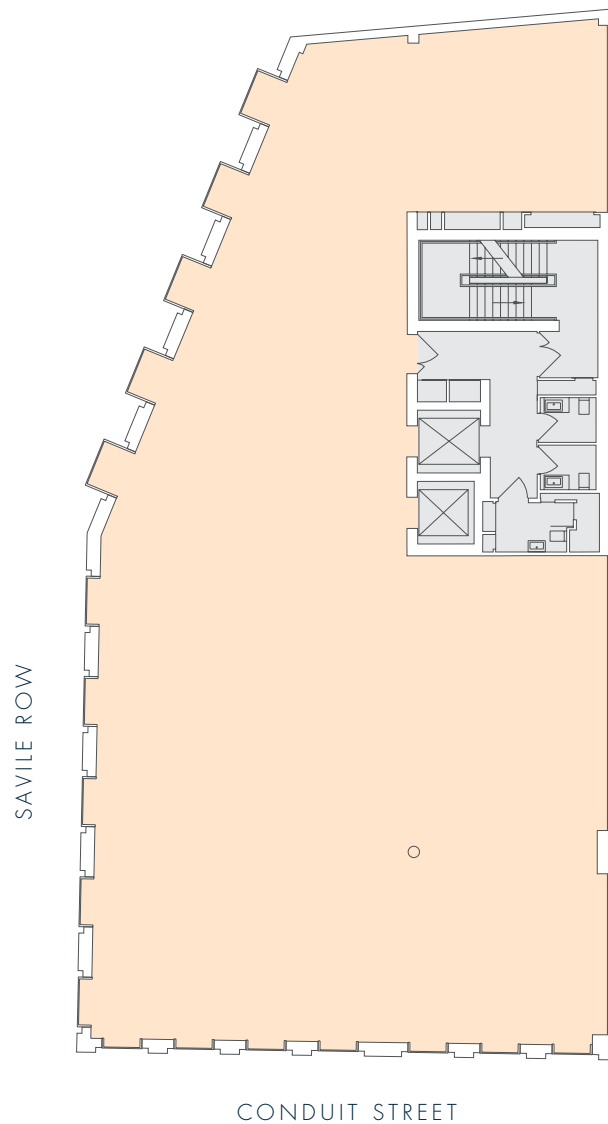
Floor plans not to scale. For indicative purposes only.





# Fourth Floor

4,498 sq ft / 417.9 sq m



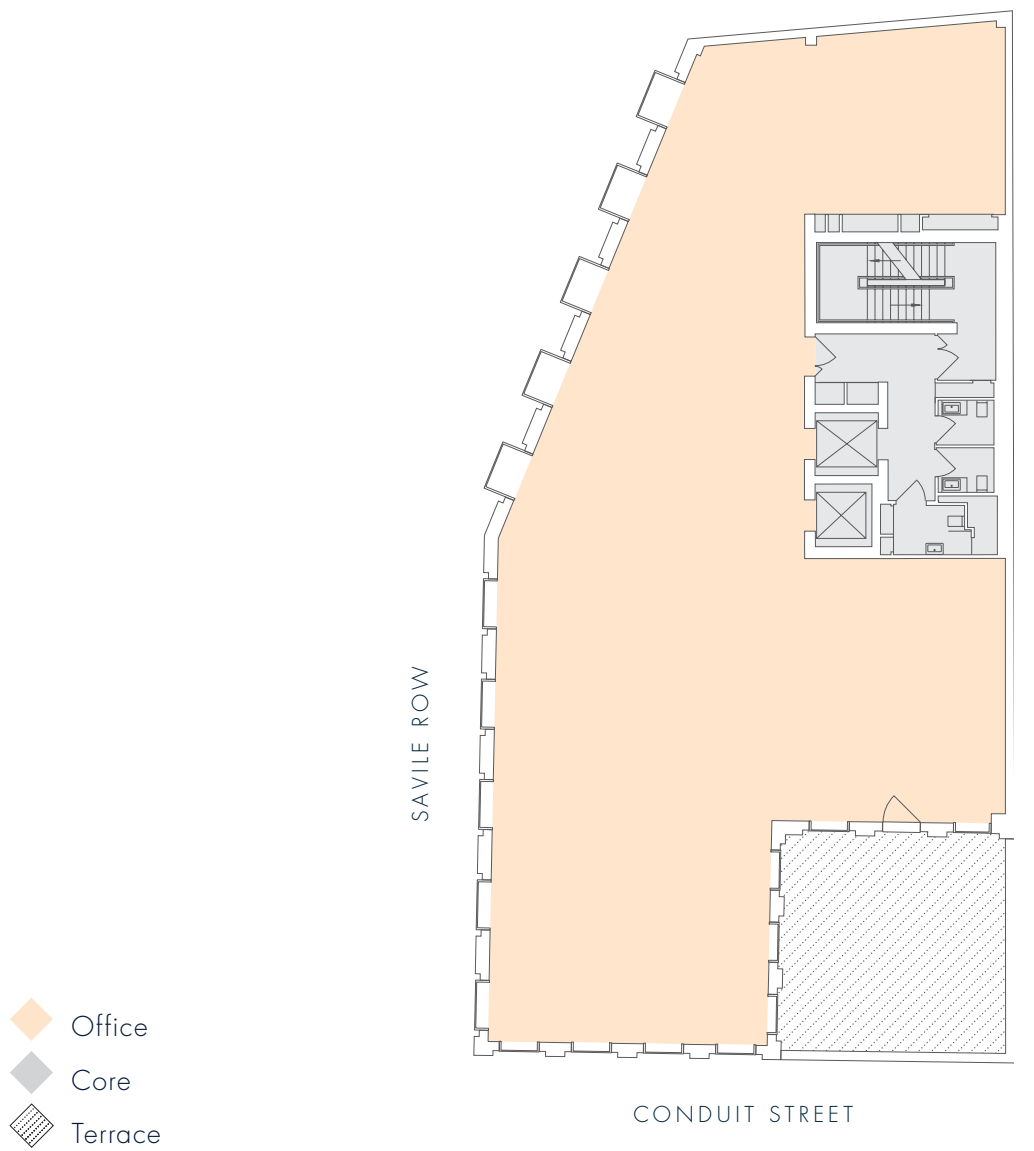
Floor plans not to scale. For indicative purposes only.





# Fifth Floor

3,774 sq ft / 350.6 sq m



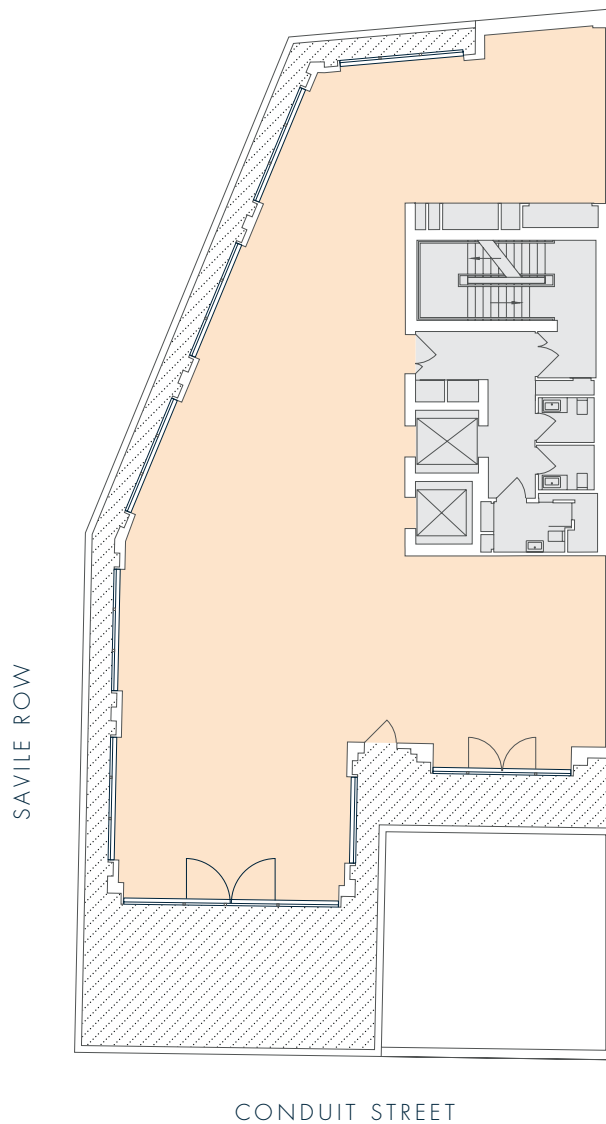
Floor plans not to scale. For indicative purposes only.





# Sixth Floor

2,873 sq ft / 266.9 sq m



- Office
- Core
- Terrace

Floor plans not to scale. For indicative purposes only.

